



DYNAMIC sEMG RANGE OF MOTION TECHNOLOGY:
THE DIAGNOSTIC TOOL FOR **THE DATA DRIVEN DOCTOR**

Validation of your clinical assessment through Dynamic ROM-EMG.

A new approach to evaluating spinal dysfunction where motion is key.

Clinicians agree that motion elicits pain in those with spinal dysfunction. Yet doctors routinely order MRI, CT, ROM and X-Ray tests which are all performed in a static posture. The lack of motion limits sensitivity of these tests to spinal function. But there is a solution: DynaROM Motion EMG is a functional test where the patient performs various motions while muscle guarding (the body's natural defense mechanism to pain) is simultaneously measured and graphed along with ROM. It's common for patients to demonstrate normal range of motion with muscle guarding and pain. Before this patented technology, there was no way to objectively evaluate a patient's true spinal function and accurately determine the presence or absence of soft tissue injury. DynaROM eliminates the guess work and provides a solid objective evaluation of soft tissue injury, even with normal ROM.



Seeing is believing.

The paradigm shift for soft tissue injury evaluation.

Imagine if a standard test like an EKG could be performed for soft tissue injuries. So often we see a patient's subjective complaint of pain lack the objective verification and validation needed to prove injury. Demonstrating these subjective complaints to insurers, juries, or mediators often comes down to the perceived credibility of the patient and the expert's opinions. Today, there is a new paradigm in soft tissue injury evaluation that puts the doctor in control of patient care. The DynaROM is a functional test that provides visual, scientific results. It is the only objective assessment of your patients subjective complaints. A review of the test data illustrates abnormal patterns of muscle firing, regardless of opiate use, just like an EKG. Finally, graphical data validating what your patient feels.



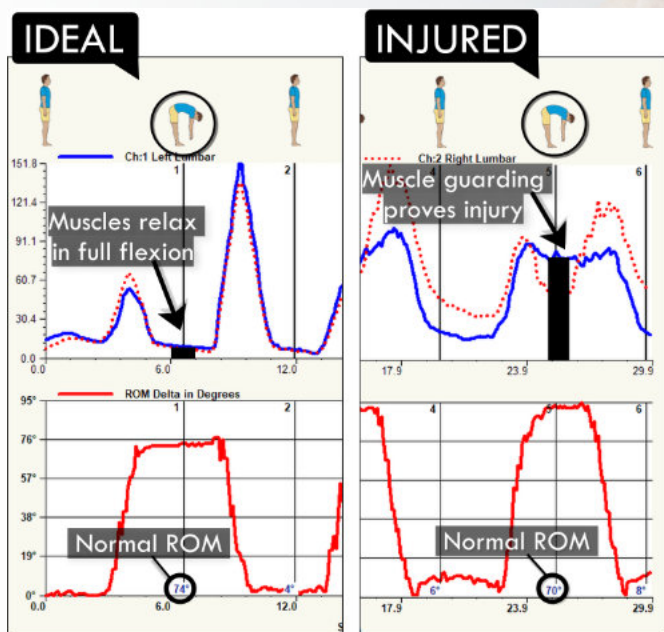
Proper clinical care begins with a complete understanding of the chief complaint.



The EKG for spinal health.

Improved patient engagement and empathetic rapport through easy to understand technology.

EKG technology has revolutionized cardiac care and is now revolutionizing how we evaluate soft tissue injury. As technology advances, it's important to adapt and expand our toolbox in order to provide the highest level of care. The patented DynaROM operates using the same EKG technology, only instead of measuring the heart, it is measuring the muscles surrounding the spine. It provides an inside look at the body's muscle guarding response; not only to see if muscles are compensating for pain, but **when** in a motion their pain response begins. This aids in clinical decision making, determining level of injury, exposing symptom magnifiers, and accurately evaluate when a patient is at MMI. It is purely objective, removing the psychological component. With this new data, you will experience greater clinical certainty resulting in improved patient care.



The first functional measure for spinal health.

The revolutionary new way of quantifying soft tissue injury.

X-Rays can show broken bones, and MRIs can show torn muscles, ligaments and other soft tissue problems, but these tests cannot identify the presence of pain. The DynaROM is a functional test that simultaneously measures spine motion and muscle activity. Muscles contract when we move, but they also contract when we experience pain. With attached electrodes, the patient will be instructed to move through a series of motions while the system graphs the muscle guarding response and ROM. By moving the patient, you effectively elicit measurable pain responses and guarding when soft tissue injury is present. A full exam can take less than 10 minutes, is completely painless, non-invasive, and is even safe for children and pregnant women.

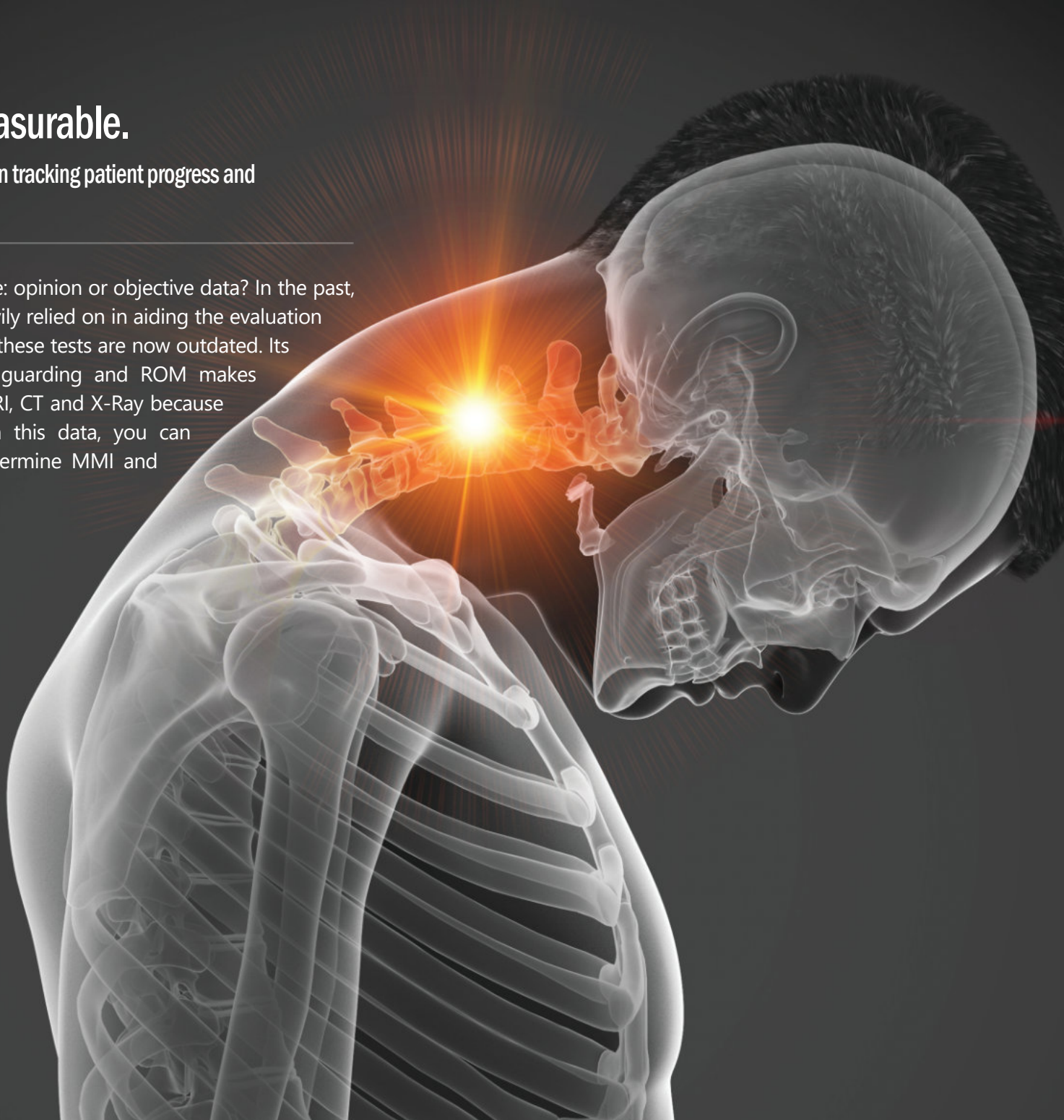
The results of this test provide the clinician with the objective data to prove or disprove soft tissue injury where all other methods have failed.



Pain response is now measurable.

A quantitative outcomes measure that aids in tracking patient progress and determining appropriate treatment protocol.

What builds a more solid, defensible case: opinion or objective data? In the past, range of motion and MRI data were heavily relied on in aiding the evaluation of soft tissue injury. With the DynaROM, these tests are now outdated. Its simultaneous measurement of muscle guarding and ROM makes DynaROM clinically superior to ROM, MRI, CT and X-Ray because the test is performed in motion. With this data, you can confidently establish need for care, determine MMI and expose symptom magnifiers.



The only complete solution.

From analysis to interpretation, DynaROM provides it all.

The benefits are multifaceted and go beyond clinical efficacy. Providing unfailing objective data, you will have better clinical certainty in your treatment protocols, allowing you to better focus your time on patients truly in pain and redirect those with other issues. Determine chronic or acute injuries, redirect symptom magnifiers, tailor your treatment protocols, and monitor and chart your patient's progress, are just a few added benefits this compact device can offer. Delivering your patients this level of care will not only give them validation, but reduced stress and overall feelings of relief.

The opportunities are endless. The DynaROM is not only used for spinal health and wellness, but many doctors are utilizing this tool for pre-employment screenings, industrial ergonomics evaluations and biofeedback treatment. The DynaROM data is the missing piece in your soft tissue injury evaluations.



A complete diagnostic tool for accurate assessment and treatment.

No boundaries, full body assessment.

DynaROM was designed with the clinician in mind, providing ergonomic hardware and intuitive software. Tests are quick, easy and completely painless. Create custom protocols to measure any muscle group, compare tests, and complete interpretation reports in minutes with easy to use guided templates. DynaROM is globally recognized as a fundamental diagnostic tool and has been quickly adopted as the gold standard in soft tissue injury evaluation as demonstrated in the AMA's, "The Practical Guide to Range of Motion Assessment." Reimbursement rates with CPT codes 96002 and 96004 reflect its clinical value. Just a single test per month can cover your lease payment. This is one piece of equipment you can't practice without.

"The impact this has made in my PI cases and general Range of Motion assessments has been measurable in both improved outcomes and practice revenue."

- Susan Smith, MD





FOR THE DATA DRIVEN DOCTOR

Contact your DynaROM Representative today.

(800) 969-6961